



2026

HUMAN POCT

PRODUCT CATALOG

VITROSENS



V.05

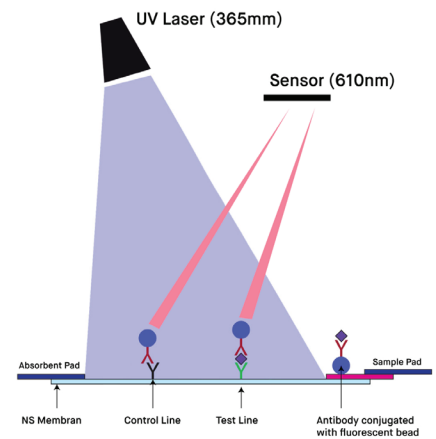
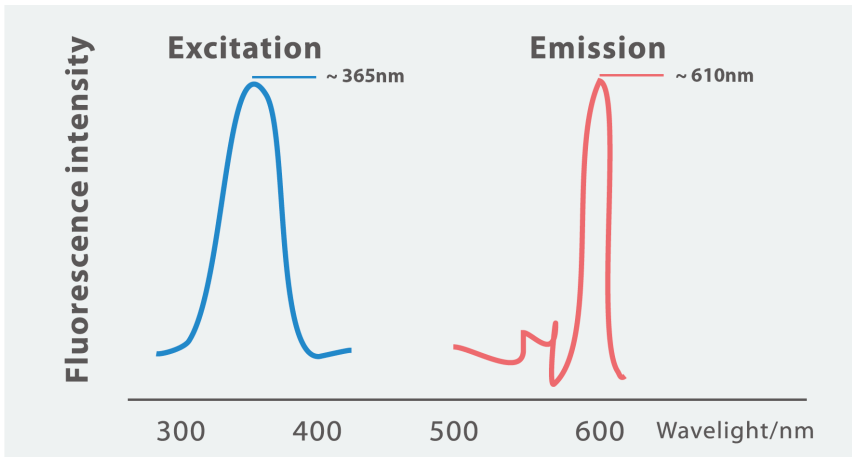
IN
TEST
WE
TRUST

Contents

| | |
|-------------------------------------|----|
| IMMUNOFLUORESCENCE ASSAY TECHNOLOGY | 4 |
| DEVICES | 5 |
| OPERATION MODES | 9 |
| HORMONES | 12 |
| THYROID | 14 |
| TUMOR MARKERS | 15 |
| VITAMINS | 16 |
| CARDIAC MARKERS | 17 |
| DIABETES | 18 |
| INFECTIOUS | 19 |
| INFLAMMATION | 20 |
| OTHER | 21 |

IMMUNOFLUORESCENCE ASSAY TECHNOLOGY

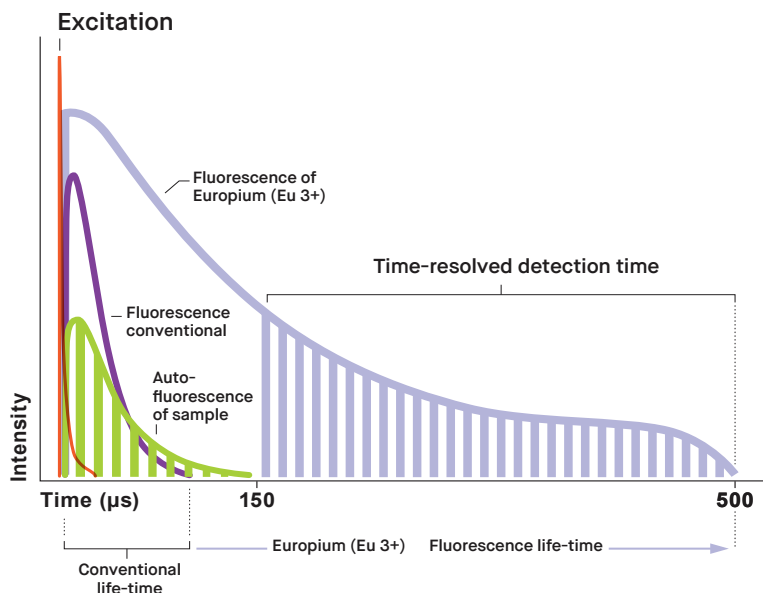
The Fluorescent Immunoassay (FIA) is a powerful laboratory technique used in biology and medicine to detect and visualize specific target molecules, typically proteins or antigens, within biological samples. It relies on the use of fluorescently labeled antibodies to bind to the target molecules, enabling their visualization under a specific device.



| Our Solutions |

Europium (Eu 3+) Chelate Labeling

- Europium Chelate is often used as a label attached to either the antigen or antibody. This label is chosen because it has unique fluorescence properties.
- The fluorescence of Europium (Eu 3+) chelates supports new strategies to avoid background noise.

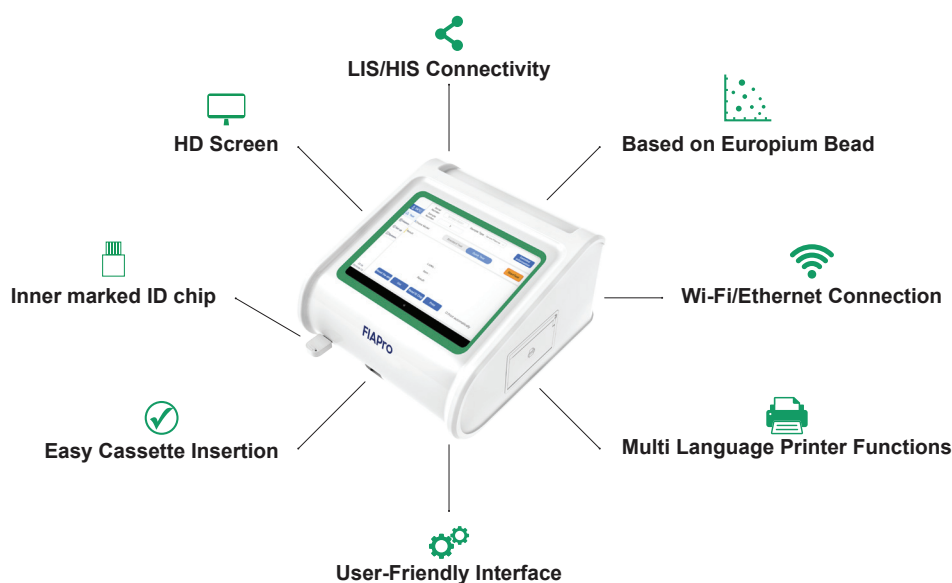


FIAPro



| Immunofluorescence Analyzer |

The FIAPro™ Immunofluorescence Analyzer is a fluorescence immunoassay analyzing instrument intended for healthcare professionals to aid in diagnosis of conditions such as cardiovascular disease, infection, diabetes, pregnancy, renal injury, and tumor markers.

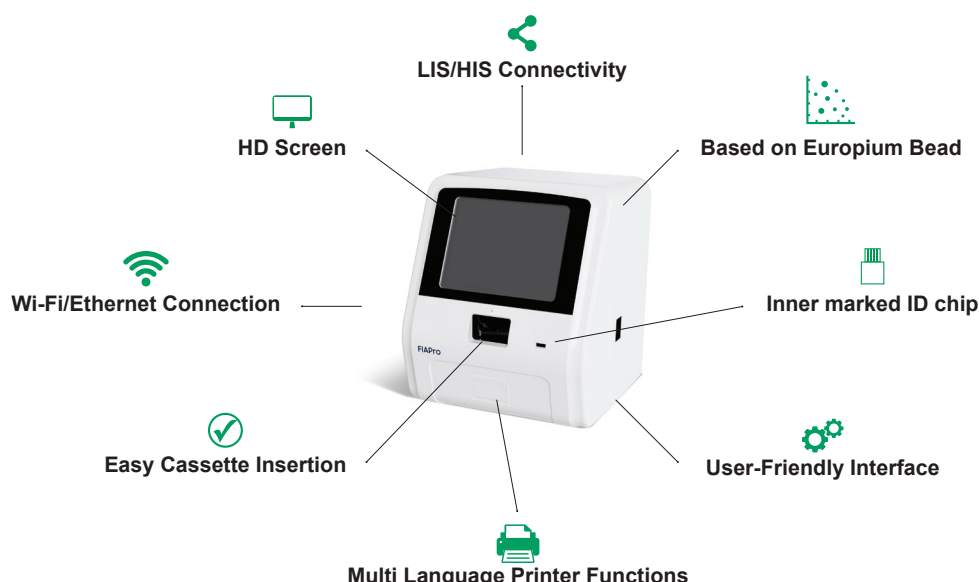


| Specification |

| Product Name | Immunofluorescence Analyzer |
|--------------|---|
| Model | VMFIA1001 |
| Size | 245*270*160 mm |
| Display | 8 inches |
| Methodology | Time-resolved fluorescence Immunoassay |
| Weight | <2 kg |
| Sample type | Whole Blood / Serum / Plasma / Urine / etc. |
| Test channel | Single-channel, automatic |
| Test items | Up to 100 |
| Test mode | Standard (Walk-away) Mode and Quick Mode |
| Test speed | Single cassette < 10s |
| Internet | Serial Port, USB, WLAN |
| Print | Built-in thermal printer |
| System | Android |
| Storage | > 50000 test records |
| Language | English, French, Spanish, Portuguese, etc. |
| Card code | QR code |

| Multi-Channel Immunofluorescence Analyzer |

The FIAPro™ Multi-Channel Immunofluorescence Analyzer is a fluorescence immunoassay analyzing instrument intended for use by healthcare professionals in clinical and laboratory settings. Based on fluorescence immunoassay principles, the system is designed to perform simultaneous multi-parameter analysis through up to 20 independent channels, enabling efficient evaluation of multiple assays and samples. The analyzer supports a broad range of diagnostic applications, including cardiovascular diseases, infectious diseases, diabetes, pregnancy, renal injury, and tumor markers. Its multi-channel configuration and intuitive operation make it suitable for laboratories requiring increased testing capacity while maintaining accurate and reliable results.



| Specification |

| Product Name | Multi-Channel Immunofluorescence Analyzer |
|--------------|---|
| Model | VMFIA1002 |
| Size | 400*410*482 mm |
| Display | 12.1 inches |
| Methodology | Time-resolved fluorescence Immunoassay |
| Weight | <20 kg |
| Sample type | Whole Blood / Serum / Plasma / Urine / etc. |
| Test channel | 20 channels |
| Test items | Up to 100 |
| Test mode | Standard (Walk-away) Mode and Quick Mode |
| Test speed | Single cassette < 10s |
| Internet | Serial Port, USB, WLAN |
| Print | Built-in thermal printer |
| System | Android |
| Storage | > 50000 test records |
| Language | English, French, Spanish, Portuguese, etc. |
| Card code | QR code |

| Immunofluorescence Analyzer |

The FIAPro™ Immunofluorescence Analyzer is a compact, high-performance diagnostic instrument designed for the quantitative detection of analytes in human specimens such as whole blood, serum, plasma, urine, and feces. Powered by advanced fluorescence detection technology, the system delivers fast, accurate, and reliable results. Its lightweight, space-saving design and integrated 9900 mAh rechargeable battery enable stable operation on flat surfaces in clinical, laboratory, and decentralized point-of-care settings.



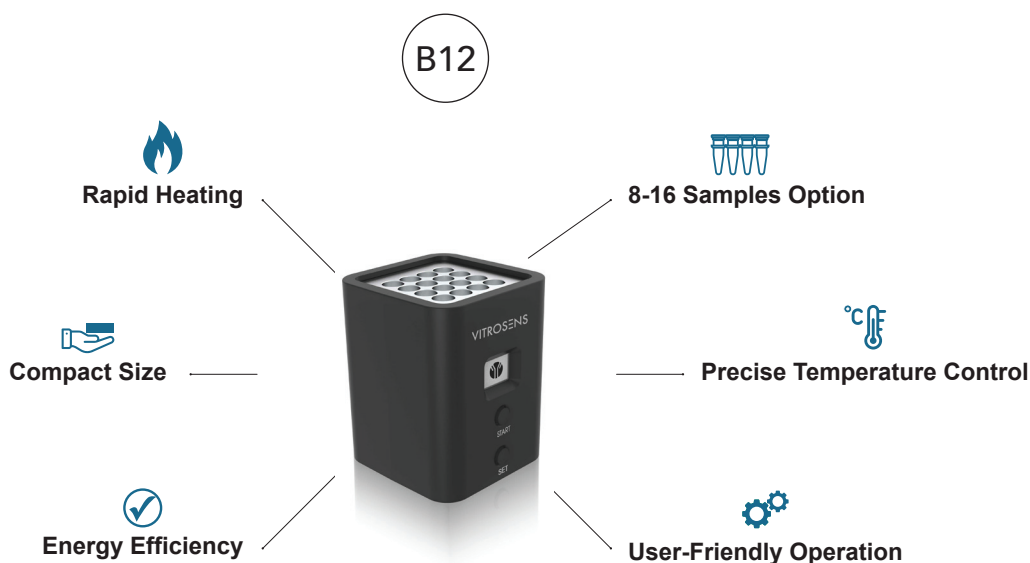
| Specification |

| Product Name | Immunofluorescence Analyzer |
|-----------------|--|
| Model | VMFIA1003 |
| Size | 249*92*88mm |
| Display | 5 inches |
| Methodology | Time-resolved Fluorescence Immunoassay |
| Weight | 0.75 kg |
| Sample type | Whole Blood / Serum / Plasma / Urine / Feces etc |
| Test channel | Single-channel |
| Test items | Up to 100 |
| Test mode | Standard (Walk-away) Mode and Quick Mode |
| Test speed | Single cassette < 10s |
| Internet | USB, WLAN |
| Print | Built-in thermal printer |
| Storage | > 50000 test records |
| Language. | English, Turkish, French, Spanish etc. |
| Lithium Battery | 9900 mAh |

| Micro Heater Incubator |



The Micro Heater Incubator is a laboratory instrument designed for precise and controlled heating of small samples, typically used in various applications in medical and life sciences research. These incubators provide a stable and controlled environment to support the growth, cultivation, or manipulation of biological materials and samples.



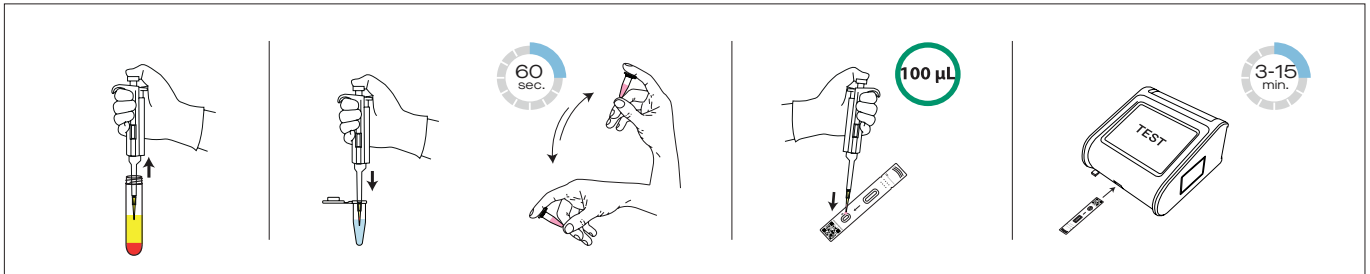
| Specification |

| Product Name | Micro Heater Incubator |
|------------------------------------|-----------------------------------|
| Model | VMH1001 |
| Input power | DC12V / 2A |
| Maximum power | 20W |
| Average power | 5W |
| Temperature range | 30°C - 40°C |
| Control target temperature | 37°C |
| Timing range | 0 to 10 minutes |
| Default time | 2 minutes |
| Temperature control accuracy | ±1°C |
| Heating time (from 20°C to 40°C) | 90 seconds |
| Ambient temperature | 5°C ~ 40°C |
| Dimensions (without power adapter) | 60×60×76mm |
| Net weight | About 150g (without power supply) |

OPERATION MODES

| Venous Blood Sampling System |

Standard Mode (Walk-away)



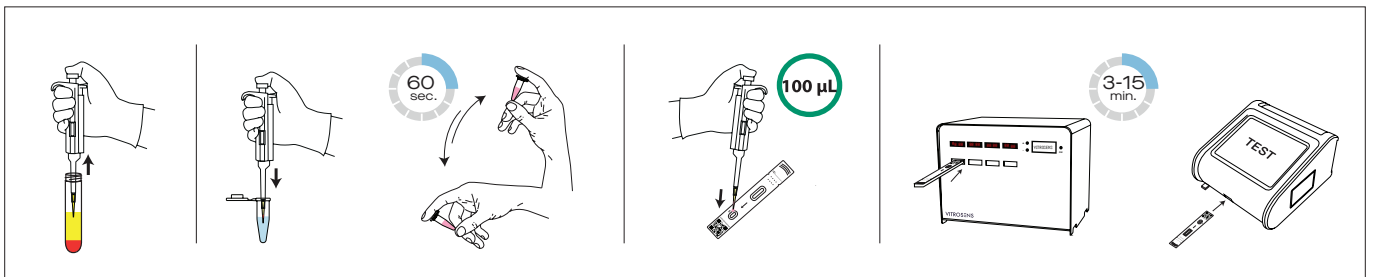
Advantages

- Fully automated incubation and measurement inside the device, eliminating user-dependent timing errors.
- QR code-based lot recognition with incubation time automatically retrieved from the ID chip.
- Stable temperature control (~25°C) minimizes temperature-related result variation.
- Walk-away workflow allows users to perform other tasks during incubation.
- High reproducibility and consistency, ideal for standardized testing environments.

Considerations

- Lower throughput compared to Quick Test Mode
- Each test occupies a device slot during the full incubation period

Quick Mode



Advantages

- High testing throughput, enabling many more tests in the same timeframe.
- Ultra-fast measurement (~5 seconds) once incubation is completed.
- Flexible workflow, well suited for busy clinical and outpatient settings.
- Enables parallel incubation of multiple test cassettes outside the device.

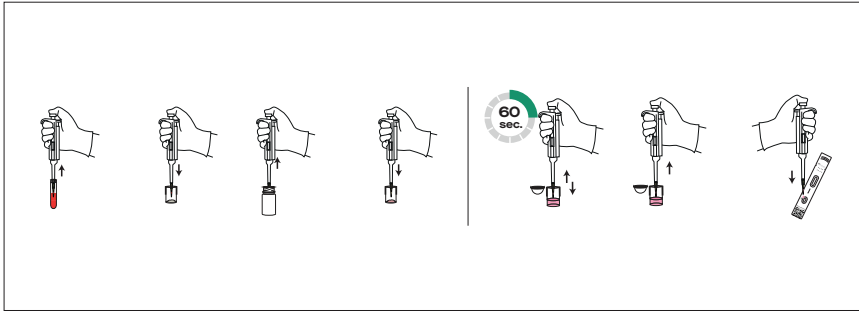
Considerations

- Incubation performed outside the device may increase temperature-related variability.
- Strict timing control is required; each test must be monitored individually.
- Usage of a 25°C cassette incubator is strongly recommended to reduce variability.

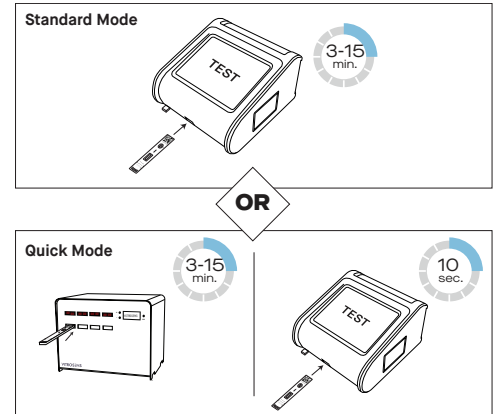
For the correct sample type (Serum/Plasma/Whole Blood), please refer to the Instructions for Use (IFU).

OPERATION MODES

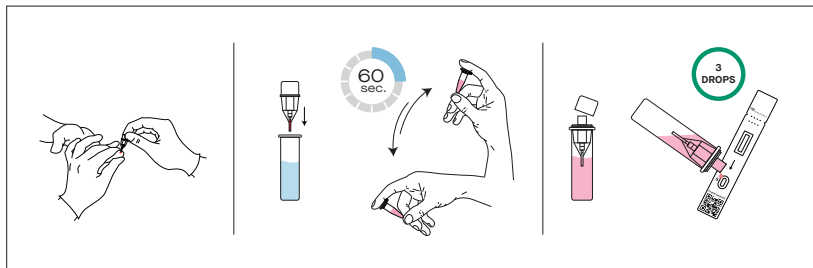
| Venous Blood Sampling System (Lyophilized Powder) |



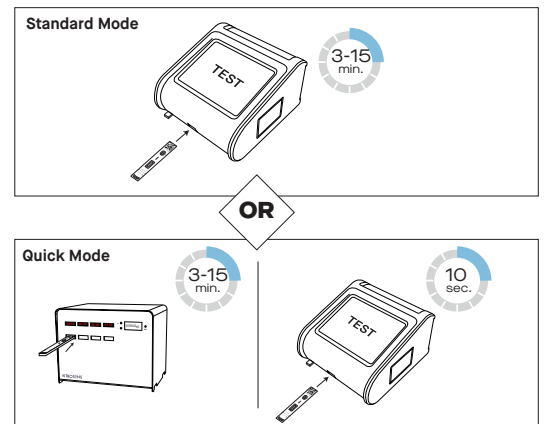
Tests Operated by This Method:
Testosterone, hs-cTnI



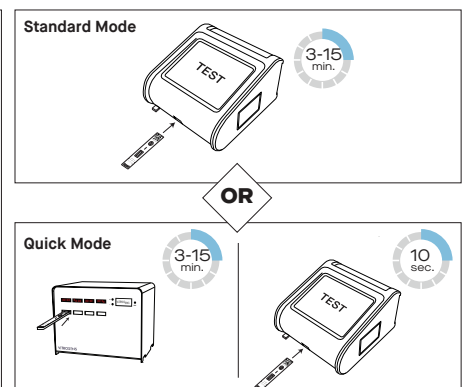
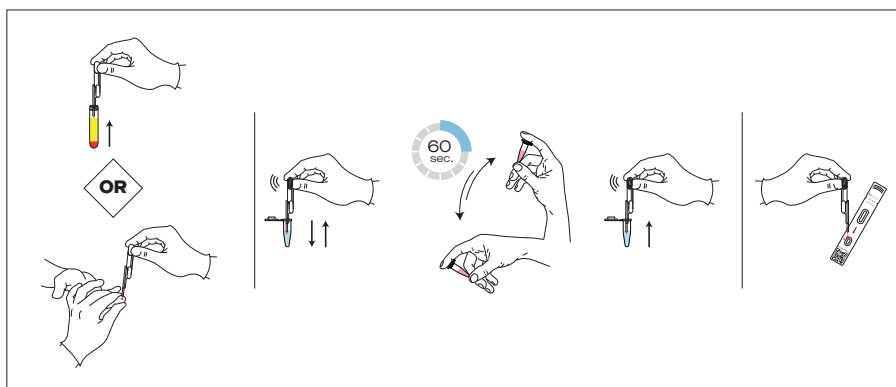
| Peripheral (Capillary) Blood Sampling System |



Tests Operated by This Method:
SAA, hsCRP/CRP, Vitamin D, HbA1c, D-dimer

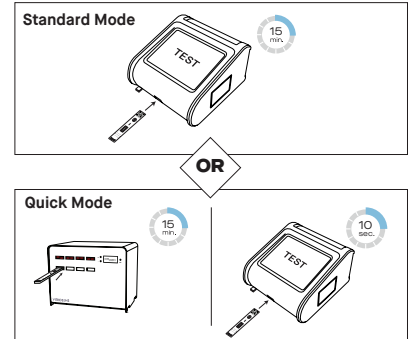
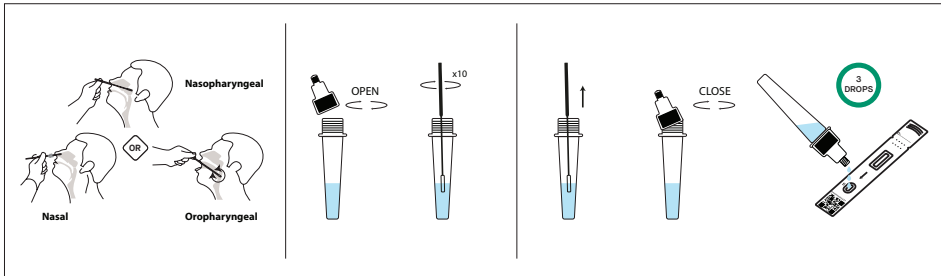


| Dual Blood Sampling System (Venous & Peripheral) |



This instruction applies to test models with the 'ED' suffix in the model number. The ED model is specifically designed for use with both peripheral (capillary) and venous blood samples.

| Respiratory Sampling System |

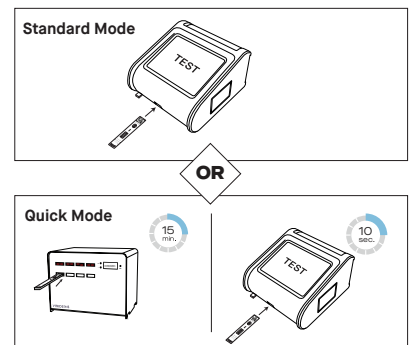
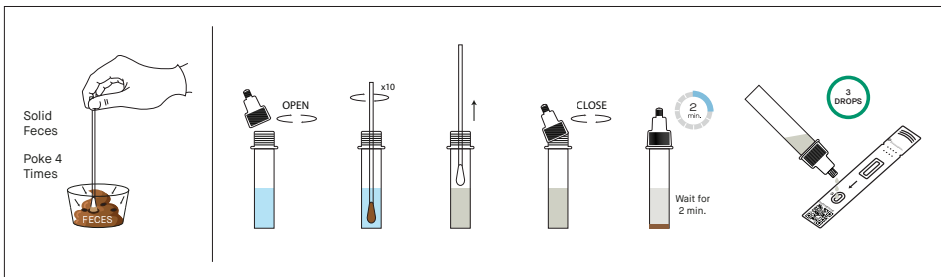


Tests Operated by This Method:

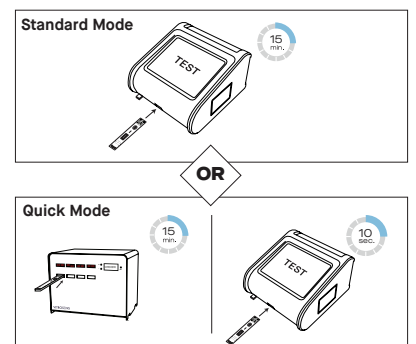
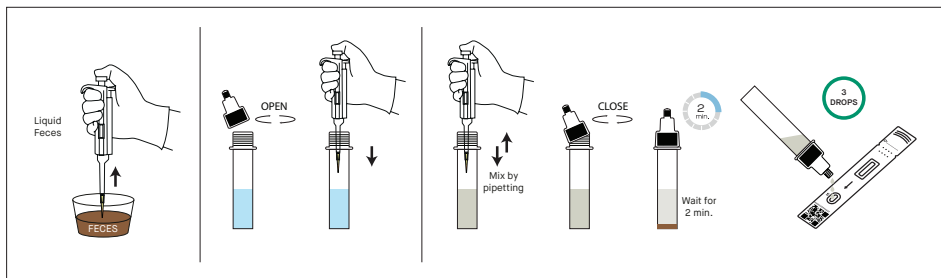
Influenza A/B, Strep A, RSV, Adenovirus, SARS- CoV2, Mycoplasma pneumonia, Parainfluenza

| Feces Sampling System |

Solid Feces Sampling System



Liquid Feces Sampling System



Tests Operated by This Method:

FOB, Rotavirus, Adenovirus, Norovirus, H.pylori, Entamoeba, Giardia lamblia, C.difficile Toxin A/B, C.difficile GDH

| Progesterone |

The RapidFor™ Progesterone (FIA) is a fluorescence immunoassay designed for use with the FIAPro™ Analyzer System to quantitatively measure progesterone concentration in human serum or plasma. This updated test simplifies the procedure by eliminating the lyophilized powder, thereby reducing the handling steps. Measuring progesterone levels is essential for assessing ovarian function, monitoring pregnancy, and diagnosing reproductive health conditions, providing valuable insights for clinical decision-making.

Box Contents

- Test Cassette
- Sample Diluent
- Pipette Tip
- ID Chip
- Instruction for Use



Test Performance

Reference Range

Males:

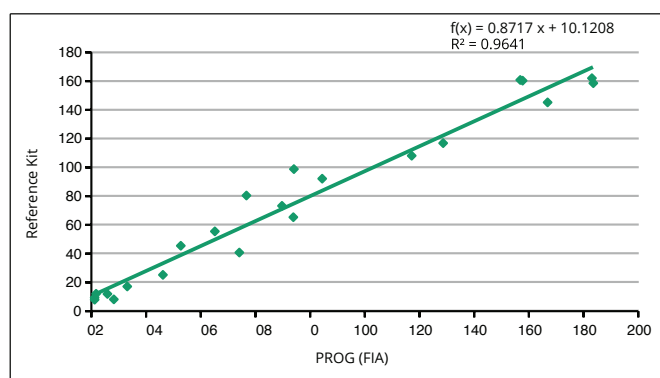
- 0.2 – 1.5 ng/mL

Females:

- Follicle phase: 0.2 – 1.5 ng/mL,
- Ovulation: 0.8 – 3.0 ng/mL,
- Luteal phase: 1.7 – 27 ng/mL,
- Post-menopausal: 0.1 – 0.8 ng/mL,
- First trimester: 9.0 – 47.0 ng/mL,
- Second trimester: 17.0 – 146.0 ng/mL,
- Third trimester: 55.0 – 255.0 ng/mL.
- Detection range: 1.11 – 190.8 nmol/L and 0.35 – 60 ng/mL

Linearity Range

- 0.35-60 ng/mL (TEQ)
- 1.11-190.8 nmol/L (MKF)



| All Hormone Products |

| Ref. No | Name | Specimen | Time | Reference Range | Linearity Range | Kit Size | Status |
|---------|----------------|----------|---------|---|-------------------|----------|----------|
| VMPO15★ | β-HCG | S/P/WB | 15 min. | < 5 mIU/mL | 5 – 200000 mIU/mL | 25 T | CE, MHRA |
| VMPO36 | Progesterone | S/P | 10 min. | 1) Male : 0.2 – 1.5 ng/mL 2) Female : Follicle phase: 0.2 – 1.5 ng/mL Ovulation: 0.8 – 3.0 ng/mL Luteal phase: 1.7 – 27 ng/mL Post-menopausal: 0.1 – 0.8 ng/mL First trimester: 9.0 – 47.0 ng/mL Second trimester: 17.0 – 146.0 ng/mL Third trimester: 55.0 – 255.0 ng/mL | 0.35 – 60 ng/mL | 25 T | CE, MHRA |
| VMPO37 | Prolactin | S/P/WB | 15 min. | 1) Male : 3.45 – 17.42 ng/mL 2) Female (not pregnant) : 4.60 – 25.07 ng/mL | 1 – 200 ng/mL | 25 T | CE, MHRA |
| VMPO38 | LH | S/P/WB | 15 min. | 1) Male : 1.70 – 8.60 mIU/mL 2) Female : Follicular phase: 2.4 – 12.6 mIU/mL Ovulation: 14.0 – 95.6 mIU/mL Luteal phase: 1.0 – 11.4 mIU/mL Menopause: 7.7 – 58.5 mIU/mL | 1 – 100 mIU/mL | 25 T | CE, MHRA |
| VMPO39 | FSH | S/P/WB | 15 min. | 1) Males : 1.5 – 12.40 mIU/mL 2) Females : Follicular phase: 3.5 – 12.5 mIU/mL Ovulation: 4.7 – 21.5 mIU/mL Luteal phase: 1.7 – 7.7 mIU/mL Menopause: 25.8 – 135 mIU/mL | 1 – 100 mIU/mL | 25 T | CE, MHRA |
| VMPO41 | Testosterone | S/P/WB | 10 min. | Adult male: 4.03 – 7.32 ng/ml Adult female: 0.37 – 0.81 ng/ml Male children: < 2.54 ng/ml Female children: < 0.20 ng/ml | 0.2 – 15 ng/mL | 25 T | CE, MHRA |
| VMPO42 | AMH | S/P/WB | 15 min. | Low: <1.0 ng/mL Normal: 1 – 4 ng/mL High: >4 ng/mL | 0.1 – 16 ng/mL | 25 T | CE, MHRA |
| VMPO43 | Estradiol (E2) | S/P | 10 min. | 1) Males: Adult: 0 – 50 pg/mL 2) Females: Follicular phase: 20 – 150 pg/mL Ovulation: 100 – 500 pg/mL Luteal phase: 30 – 300 pg/mL Menopause: <50 pg/mL | 15 – 3000 pg/mL | 25 T | CE, MHRA |
| VMPO55 | Cortisol | S | 5 min. | 60 – 230 µg/L | 80 – 800 µg/L | 25 T | CE, MHRA |

★ Highlighted Products

THYROID

| Thyroid-Stimulating Hormone (TSH) |

The RapidFor™ TSH (FIA) is a fluorescence immunoassay used along with the FIAPro™ Analyzer System for the quantitative determination of Thyroid-Stimulating Hormone (TSH) in human whole blood, serum, or plasma. This test is used as an aid to assist in the assessment of the pituitary gland and thyroid function.

Box Contents

- Test Cassette
- Sample Diluent
- Pipette Tip
- ID Chip
- Instruction for Use



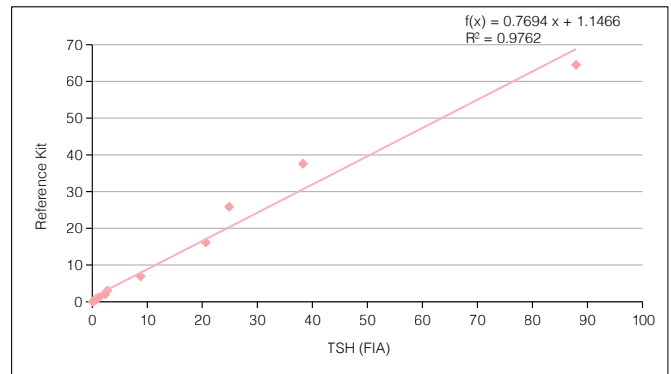
Test Performance

Reference Range

- 0.3 - 4.2 mIU/L

Linearity Range

- 0.1 - 100 mIU/L



| All Thyroid Products |

| Ref. No | Name | Specimen | Time | Reference Range | Linearity Range | Kit Size | Status |
|---------|-----------|----------|---------|---|---|----------|----------|
| VMPO01 | TSH | S/P/WB | 15 min. | 0.3 – 4.2 mIU/L | 0.1 – 100 mIU/L | 25 T | CE, MHRA |
| VMPO02 | T3 | S/P/WB | 15 min. | 1.23 – 3.07 nmol/L (0.8 – 2.0 ng/mL) | 0.61 – 9.22 nmol/L | 25 T | CE, MHRA |
| VMPO03 | T4 | S/P/WB | 15 min. | 66 – 181 nmol/L (5.1 – 14 µg/dL) | 12.87 – 310 nmol/L | 25 T | CE, MHRA |
| VMPO13 | FT3 | S/P/WB | 15 min. | 2.8 – 7.1 pmol/L (1.82 – 4.61 pg/mL) | 0.60 – 45.00 pmol/L (0.39 – 29.22 pg/mL) | 25 T | CE, MHRA |
| VMPO14 | FT4 | S/P/WB | 15 min. | 12 – 22 pmol/L (0.94 – 1.72 ng/dL) | 1.0 – 100 pmol/L (0.078 – 7.7 ng/dL) | 25 T | CE, MHRA |
| VMPO121 | TSH/T3/T4 | S/P/WB | 15 min. | Same with single items | Same with single items | 25 T | CE, MHRA |
| VMPO136 | TSH/FT4 | S/P/WB | 15 min. | Same with single items | Same with single items | 25 T | CE, MHRA |

TUMOR MARKERS

| Total Prostate Specific Antigen (Total PSA) |

The RapidFor™ Total PSA (FIA) is a fluorescence immunoassay used along with the FIAPro™ Analyzer System for quantitative determination of total Prostate Specific Antigen Total PSA in human whole blood, serum, or plasma. The test is utilized as an aid in the diagnosis of prostate cancer.

Box Contents

- Test Cassette
- Sample Diluent
- Pipette Tip
- ID Chip
- Instruction for Use



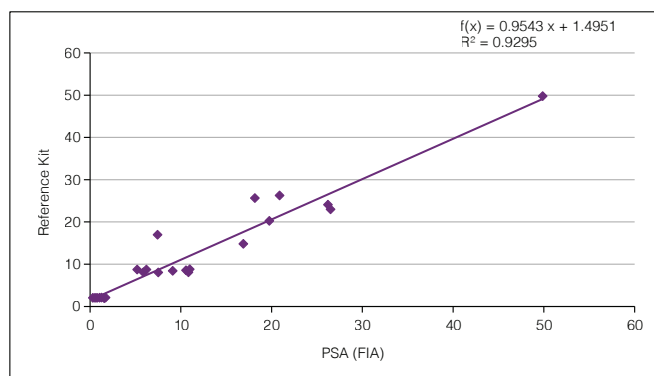
Test Performance

Reference Range

- 0 - 4.0 ng/mL

Linearity Range

- 2 - 80 ng/mL



| All Tumor Markers Products |

| Ref. No | Name | Specimen | Time | Reference Range | Linearity Range | Kit Size | Status |
|---------|-----------|----------|---------|-----------------|-----------------|----------|----------|
| VMPO07 | Total PSA | S/P/WB | 15 min. | 0 – 4.0 ng/mL | 2 – 80 ng/mL | 25 T | RUO |
| VMPO40 | Free PSA | S/P/WB | 15 min. | ≤ 1ng/mL | 0.2 – 30 ng/mL | 25 T | RUO |
| VMPO51 | AFP | S/P | 15 min. | 0 – 20 ng/mL | 3 – 1200 ng/mL | 25 T | CE, MHRA |
| VMPO52 | CEA | S/P/WB | 15 min. | ≤ 4.7 ng/mL | 0.5 – 600 ng/mL | 25 T | CE, MHRA |
| VMPO59 | FOB | F | 15 min. | Qualitative | 0.1 – 100 COI | 25 T | CE, MHRA |
| VMPO60 | CA19-9 | S/P | 15 min. | ≤ 37 U/mL | 5 – 10000 U/mL | 25 T | CE, MHRA |
| VMPO84 | CA15-3 | S/P | 15 min. | ≤ 30 U/mL | 5 – 150 U/mL | 25 T | CE, MHRA |
| VMPO102 | CA125 | S/P | 15 min. | < 35 U/mL | 10 – 2000 U/mL | 25 T | CE, MHRA |
| VMPO122 | iFOB | F | 15 min. | < 100 ng/mL | 25 – 1000 ng/mL | 25T | CE, MHRA |

VITAMINS

| Vitamin D |

The RapidFor™ Vitamin D (FIA) is a diagnostic tool designed for the swift and efficient detection of vitamin D levels in clinical samples. This rapid test kit employs an advanced FIAPro™ Analyzer System, utilizing fluorescent markers to detect and quantify vitamin D in clinical samples.

Box Contents

- Test Cassette
- Sample Diluent
- Pipette Tip
- ID Chip
- Instruction For Use



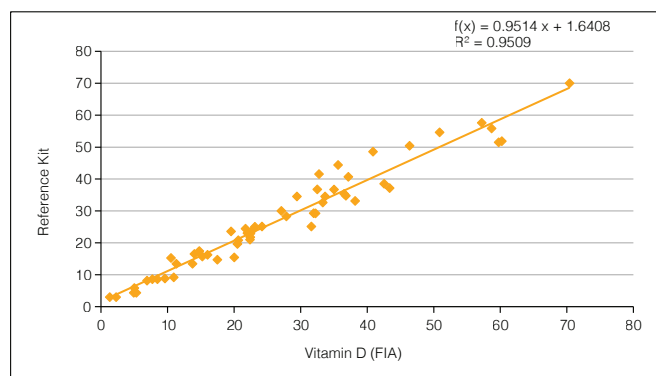
Test Performance

Reference Range

- 30 - 100 ng/mL

Linearity Range

- 3 - 100 ng/mL



| All Vitamin Products |

| Ref. No | Name | Specimen | Time | Reference Range | Linearity Range | Kit Size | Status |
|----------|-----------------|----------|---------|------------------|------------------|----------|----------|
| VMPO81 | Vitamin B12 | S/P | 10 min. | 200 – 900 pg/mL | 100 – 1800 pg/mL | 25 T | CE, MHRA |
| VMPO83 | Folic Acid (B9) | S/P | 5 min. | 3.0 – 17.0 ng/mL | 1.5 – 20 ng/mL | 25 T | CE, MHRA |
| VMPO89*★ | Vitamin D | S/P/WB | 15 min. | 30 – 100 ng/mL | 3 – 100 ng/mL | 25 T | CE, MHRA |

* Peripheral Blood Option

★ Highlighted Products

CARDIAC MARKERS

| High Sensitive Cardiac Troponin I (hs-cTnI) |

The RapidFor™ hscTnI (FIA) along with FIAPro™ Analyzer System is intended for in vitro quantitative determination of cardiac troponin I (hs-cTnI) in human whole blood, serum or plasma. This test is used as an aid in the diagnosis of myocardial injury such as Acute Myocardial Infarction (AMI), Unstable Angina, Acute Myocarditis, and Acute Coronary Syndrome (ACS).

Box Contents

- Test Cassette
- Pipette Tip
- Sample Diluent
- ID Chip
- Instruction For Use



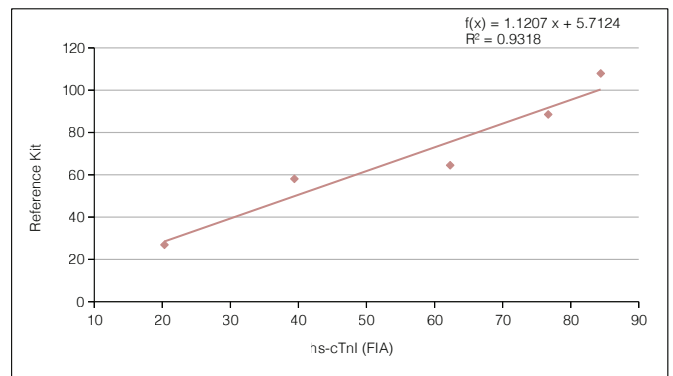
Test Performance

Reference Range

- 0 - 30 pg/mL

Linearity Range

- 10 - 10000 pg/mL



| All Cardiac Markers Products |

| Ref. No | Name | Specimen | Time | Reference Range | Linearity Range | Kit Size | Status |
|---------|----------------|----------|---------|--|------------------------|----------|----------|
| VMPO04 | cTnI | S/P/WB | 15 min. | 0 – 0.3 ng/mL | 0.1 – 40 ng/mL | 25 T | CE, MHRA |
| VMPO05 | NT-ProBNP | S/P/WB | 15 min. | < 75 aged : 0 – 300 pg/mL ≥ 75 aged : 0 – 450 pg/mL | 100 – 30000 pg/mL | 25 T | CE, MHRA |
| VMPO08* | D-Dimer | P/WB | 5 min. | 0 – 0.5 mg/L | 0.1 – 10 mg/L | 25 T | CE, MHRA |
| VMPO12 | Myoglobin | S/P/WB | 15 min. | < 80 ng/mL | 10 – 1000 ng/mL | 25 T | CE, MHRA |
| VMPO18 | CK-MB | S/P/WB | 15 min. | < 5 ng/mL | 1 – 100 ng/mL | 25 T | CE, MHRA |
| VMPO35 | cTnI/Myo/CK-MB | S/P/WB | 15 min. | Same with single items | Same with single items | 25 T | CE, MHRA |
| VMPO45 | BNP | S/P | 15 min. | < 100 ng/L | 10 – 2500 ng/L | 25 T | CE, MHRA |
| VMPO46 | cTnT | S/P | 15 min. | ≤ 0.01 ng/mL | 0.05 – 10 ng/mL | 25 T | CE, MHRA |
| VMPO87★ | hs-cTnI | S/P/WB | 15 min. | 0 – 34 pg/mL | 20 - 10000 pg/mL | 25 T | CE, MHRA |

★ Highlighted Products

* Peripheral Blood Option

DIABETES

| Hemoglobin A1c (HbA1c) |



The RapidFor™ HbA1c (FIA), utilizes FIAPro™ Analyzer System and is an advanced diagnostic tool designed for the rapid and efficient detection of HbA1c levels in clinical samples. This test offers healthcare professionals an invaluable tool for swift and accurate assessment, contributing to timely and informed clinical decisions regarding glycemic control in patients.

Box Contents

- Test Cassette
- Sample Diluent
- Pipette Tip
- ID Chip
- Instruction for Use



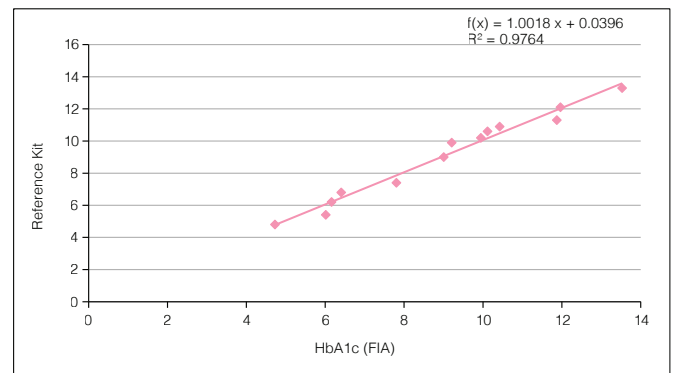
Test Performance

Reference Range

- 4% - 6%

Linearity Range

- 3% - 14%



| All Diabetes Products |

| Ref. No | Name | Specimen | Time | Reference Range | Linearity Range | Kit Size | Status |
|---------|---------|----------|---------|-----------------------------|------------------|----------|----------|
| VMPO06★ | HbA1c | WB | 5 min. | 4% - 6% | 3% - 14% | 25 T | CE, MHRA |
| VMPO85 | Insulin | S/P | 15 min. | Fasting : 17.8 – 173 pmol/L | 10 – 3000 pmol/L | 25 T | CE, MHRA |

* Peripheral Blood Option

★ Highlighted Products

| Dengue NS1 Ag |

The RapidFor™ Dengue NS1 (FIA), designed for use with the FIAPro™ Analyzer System, is a diagnostic tool developed for the qualitative detection of the NS1 Antigen in human serum, plasma, and whole blood during dengue virus infection. This test is useful as an aid in the screening of early Dengue virus infection.

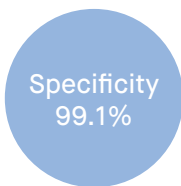
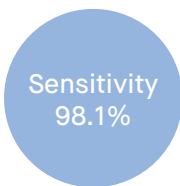


Box Contents

- Test Cassette
- Sample Diluent
- Pipette Tip
- ID Chip
- Instruction for Use

Advantages

- Useful for auxiliary diagnosis of Dengue virus
- Easily operated interface
- Accurate results
- Maximized sensitivity



| All Infections Products |

| Ref. No | Name | Specimen | Time | Interpretation | Kit Size | Status |
|---------|------------------------|----------|---------|---|----------|----------|
| VMPO58★ | Influenza A/B | NP/N | 15 min. | Qualitative | 25 T | CE, MHRA |
| VMPO61★ | Strep A | OP | 5 min. | Qualitative | 25 T | CE, MHRA |
| VMPO62 | RSV | NP | 15 min. | Qualitative | 25 T | CE, MHRA |
| VMPO63 | Mycoplasma pneumoniae | OP | 15 min. | Qualitative | 25 T | CE, MHRA |
| VMPO64 | Rotavirus | F | 15 min. | Qualitative | 25 T | CE, MHRA |
| VMPO65 | Adenovirus Gastro | F | 15 min. | Qualitative | 25 T | CE, MHRA |
| VMPO66 | Norovirus | F | 15 min. | Qualitative | 25 T | CE, MHRA |
| VMPO67★ | H.pylori | F | 15 min. | Qualitative | 25 T | CE, MHRA |
| VMPO68 | HCV Ab | S/P | 15 min. | Qualitative | 25 T | RUO |
| VMPO69 | HBsAg | S/P | 15 min. | Qualitative | 25 T | RUO |
| VMPO71★ | Dengue NS1 | S/P/WB | 15 min. | Qualitative | 25 T | CE, MHRA |
| VMPO72 | Dengue IgG/IgM | S/P/WB | 15 min. | Qualitative | 25 T | CE, MHRA |
| VMPO73★ | Malaria P.f./Pan | WB | 15 min. | Qualitative | 25 T | CE, MHRA |
| VMPO74 | Malaria P.f./P.v. | WB | 15 min. | Qualitative | 25 T | CE, MHRA |
| VMPO75 | Toxo Ab | S/P | 15 min. | Qualitative | 25 T | RUO |
| VMPO88 | HbsAb | S/P | 15 min. | Negative: < 10 IU/L Positive (Protective): ≥ 10 IU/L | 25 T | RUO |
| VMPO103 | Adenovirus Respiratory | NP/N | 15 min. | Qualitative | 25 T | CE |
| VMPO104 | Neisseria gonorrhoeae | VS | 15 min. | Qualitative | 25 T | CE, MHRA |
| VMPO105 | Crypto | F | 15 min. | Qualitative | 25 T | CE, MHRA |
| VMPO106 | Entamoeba | F | 15 min. | Qualitative | 25 T | CE, MHRA |
| VMPO107 | Giardia lamblia | F | 15 min. | Qualitative | 25 T | CE, MHRA |
| VMPO108 | C.difficile Toxin A/B | F | 15 min. | Qualitative | 25 T | CE, MHRA |
| VMPO119 | Chlamydia trachomatis | VS | 15 min. | Qualitative | 25 T | RUO |
| VMPO123 | Parainfluenza | NP/N | 15 min. | Qualitative | 25 T | CE, MHRA |
| VMPO124 | C.difficile GDH | F | 15 min. | Qualitative | 25 T | CE, MHRA |
| VMPO125 | Legionella | Urine | 15 min. | Qualitative | 25 T | CE, MHRA |
| VMPO126 | S. pneumoniae | Urine | 15 min. | Qualitative | 25 T | CE, MHRA |
| VMPO129 | Rota/Adeno | F | 15 min. | Qualitative | 25 T | CE, MHRA |
| VMPO131 | Syphilis Ab | S/P | 15 min. | Qualitative | 25 T | CE, MHRA |
| VSCD03 | SARS-CoV-2 | NP/OP/N | 15 min. | Qualitative | 25 T | CE |

INFLAMMATION

| PCT |

The RapidFor™ PCT (FIA) utilizes FIAPro™ Analyzer System is a diagnostic tool designed for the quick and efficient detection of Procalcitonin (PCT) in human serum, plasma, and whole blood. This product is used in medical and health institutions as a supportive tool in the evaluation of systemic bacterial infections and sepsis in clinical practice.

Box Contents

- Test Cassette
- Sample Diluent
- Pipette Tip
- ID Chip
- Instruction for Use



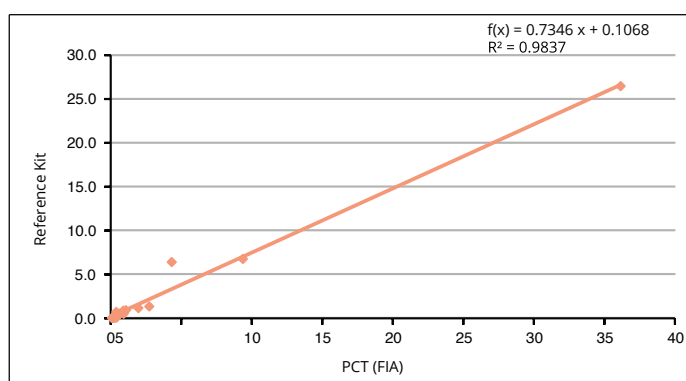
Test Performance

Reference Range

0 – 0.5 ng/mL

Linearity Range

- 0.1-100 ng/mL



| All Inflammation Products |

| Ref. No | Name | Specimen | Time | Reference Range | Linearity Range | Kit Size | Status |
|---------|-----------------|----------|---------|---------------------------------------|-----------------|----------|----------|
| VMPO09★ | PCT | S/P/WB | 15 min. | < 0.5 ng/mL | 0.1 – 100 ng/mL | 25 T | CE, MHRA |
| VMPO11★ | hsCRP&CRP | S/P/WB | 3 min. | "hs-CRP: <1.0 mg/L CRP: < 10 mg/L" | 0.5 – 200 mg/L | 25 T | CE, MHRA |
| VMPO29* | Serum Amyloid A | S/P/WB | 15 min. | 0 – 10 mg/L | 2 – 200 mg/L | 25 T | CE, MHRA |
| VMPO34 | IL-6 | S/P/WB | 15 min. | ≤ 10 pg/mL | 5 – 5000 pg/mL | 25 T | CE, MHRA |
| VMPO80 | Calprotectin | F | 10 min. | 0 – 50 mg/kg | 10 – 1000 mg/kg | 25T | CE, MHRA |

* Peripheral Blood Option

★ Highlighted Products

OTHER

Ferritin

The RapidFor™ Ferritin (FIA) operates on the FIAPro™ Analyzer System, the kit utilizes fluorescent markers to detect and quantify ferritin in human whole blood, serum, or plasma. The test is used as an aid in the assessment of iron deficiency anemia.

Box Contents

- Test Cassette
- Sample Diluent
- Pipette Tip
- ID Chip
- Instruction for Use



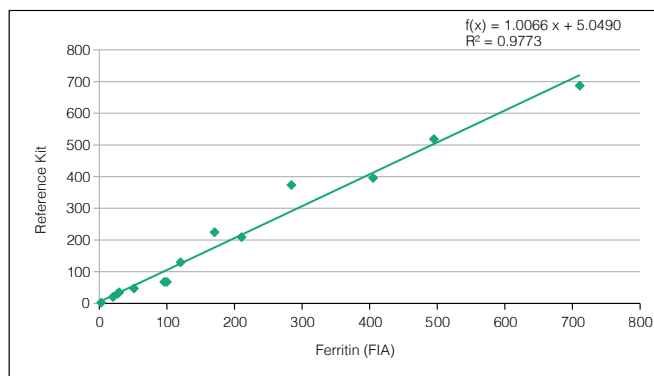
Test Performance

Reference Range

- Male: 30 - 400 ng/mL
- Female: 13 - 150 ng/mL

Linearity Range

- 5 - 500 ng/mL



Order Information

| Ref. No | Name | Specimen | Time | Reference Range | Linearity Range | Kit Size | Status |
|-----------|---------------|-----------|---------|--|-----------------|----------|----------|
| VMPO16 | Carbamazepine | S/P/WB | 10 min. | 4-12 mg/L | 2-20ug/mL | 25 T | CE, MHRA |
| VMPO19 | Cystatin C | S/P/WB | 15 min. | 0 – 1.3 mg/L | 0.1 – 8.0 mg/L | 25 T | CE, MHRA |
| VMPO21* ★ | Ferritin | S/P/WB | 15 min. | "Males : 30 – 400 ng/mL Females : 13 – 150 ng/mL" | 5 – 500 ng/mL | 25 T | CE, MHRA |
| VMPO26 | NGAL | S/P/Urine | 10 min. | "Serum or plasma sample: 20 – 150 ng/mL. Urine sample: <25 ng/mL " | 10-1000ng/mL | 25 T | CE, MHRA |
| VMPO49 | Microalbumin | Urine | 5 min. | < 20 mg/L | 10 – 300 mg/L | 25 T | CE, MHRA |
| VMPO79 | IgE | S/P/WB | 15 min. | "Neonatal IgE: 0 – 1.5 IU/mL IgE within 1 year: 0 – 15 IU/mL 1-5 years old IgE: 0 – 60 IU/mL 6-9 years old IgE: 0 – 90 IU/mL 10-15 years old IgE: 0 – 200 IU/mL Adult IgE: 0 – 100 IU/mL" | 20 – 4000 ng/mL | 25 T | CE, MHRA |
| VMPO135 | Creatinine | S/P | 5 min. | "Males : 0.74 - 1.35 mg/dL Females : 0.59 - 1.04 mg/dL" | 0.1-25mg/dL | 25 T | CE, MHRA |

★ Highlighted Products

* Peripheral Blood Option



IN TEST WE TRUST

vitrosens.com