

The background of the top half of the page features several wireframe models of Y-shaped antibody molecules. These models are rendered in a light green color against a darker green background. The central model is the largest and most detailed, showing the characteristic Y-shape with two long arms and two shorter arms. Several smaller, similar models are scattered around it, some in different orientations and sizes, creating a sense of depth and scientific focus.

2026

HUMAN HEALTH

PRODUCT CATALOG

VITROSENS



V.13.2

IN
TEST
WE
TRUST

Contents

IMMUNOCHROMATOGRAPHY
TECHNOLOGY

4

SEXUALLY TRANSMITTED
DISEASES

6

RESPIRATORY DISEASES

8

GASTROINTESTINAL
DISEASES

10

CARDIAC MARKERS

12

TROPICAL DISEASES

14

TUMOR MARKERS

16

FERTILITY

18

DRUGS OF ABUSE

20

IMMUNOCHROMATOGRAPHY TECHNOLOGY

| Colloidal Gold Nanoparticles |

From the beginning, Vitrosens Biotechnology had the mission of developing diagnostic solutions and being developed as a part of these solutions. During our path to following this mission over the years, we developed our in-house colloidal gold nanoparticles, the core material for the developed technology, in the size of 40nm (Fig.1). We successfully integrated them into our rapid diagnostic solutions.

In-house produced Colloidal Gold Nanoparticles are characterized by using UV-Vis Spectrophotometry (Fig.2), Dynamic Light Scattering (DLS) (Fig.3), and Transmission Electron Microscope (TEM) imaging (Fig.4).

In-house Colloidal Gold Nanoparticle Advantages:

1. **Custom-Engineering:** Ensuring the flexibility to manage quality and performance
2. **Enhanced Accuracy:** Higher sensitivity and specificity.
3. **Large-Scale Capacity:** Maximizing the production capacity and minimizing error rate.



Fig.1

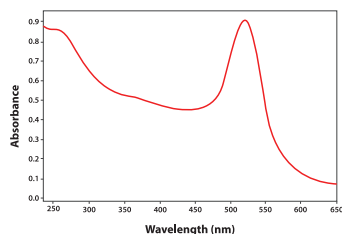


Fig.2

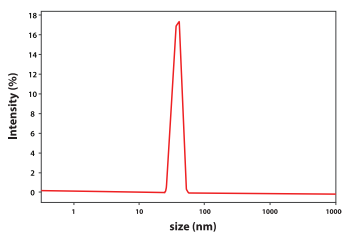


Fig.3

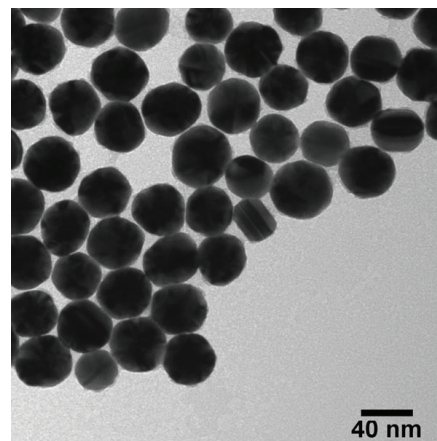


Fig.4

| Latex Beads |

Our second most-used material in immunochromatography is the latex beads (200, 300 nm) (Fig.5), which give the advantages below:

1. **Enhanced Sensitivity:** The large surface area of latex beads increases the attachment area of target molecules.
2. **Flexible in Color:** Latex beads can be dyed in various colors, which ensures the Double-Colored LFA technology (Fig.6) and Triple-Colored LFA technology (Fig.7).



Fig.5



Fig.6



Fig.7

| Rapid Diagnostic |

Our rapid kit are diagnostic devices designed to provide the best performance most simply. As Vitrosens Biotechnology, our rapid test portfolio mainly covers the diagnosis of gastrointestinal, and respiratory tract infections, tumor markers, and sexually transmitted diseases.



Easy-To-Use



Result In
2-15 Minutes



Reliable



Easy To
Interpret

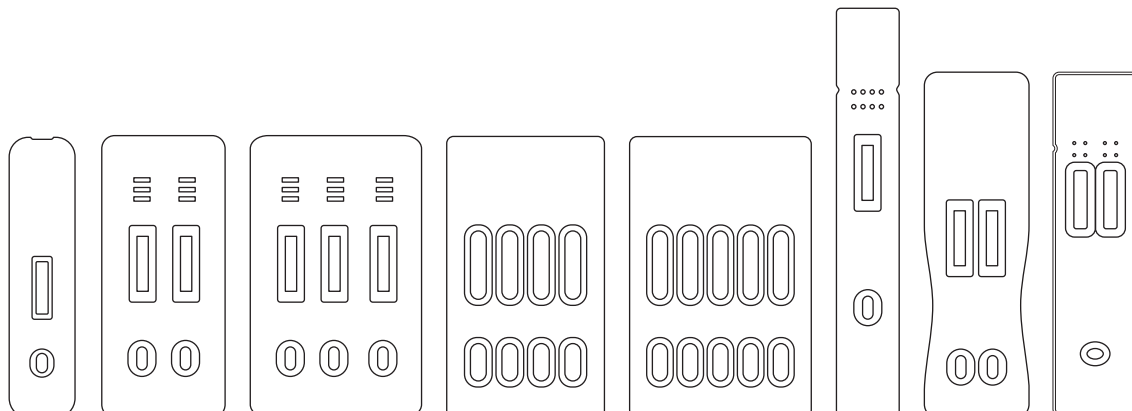


Features

- Easy to use and interpret in several strip tests
- No need for special equipment
- Intended for single use
- Cost-effective
- Wide range of applications
- Regulatory compliance
- Minimize risk of error in result interpretation

| Test Formats |

- Employ a singular device to conduct a variety of tests using a sole sample.
- Streamline the testing process with a single sample, minimal preparation, and the capability for panel testing.
- Diagnose multiple analytes swiftly, achieving results in a few minutes.
- Mitigate the risk of mishandling results through a design that reduces the likelihood of errors.
- Enhance operational efficiency with a testing system designed for seamless and rapid execution.



SEXUALLY TRANSMITTED DISEASES

Sexually Transmitted Diseases (STDs) usually do not cause any symptoms, which makes them difficult to detect. The lack of symptoms, especially in the early stages of infection, causes detection difficulties and underlines the importance of regular screening and testing, especially for sexually active individuals. Our Sexually Transmitted Disease Solutions focus on the following pathogens:

Viruses

- Human Papillomavirus (HPV)
- HIV/AIDS
- Hepatitis A
- Hepatitis B
- Hepatitis C
- Hepatitis E
-

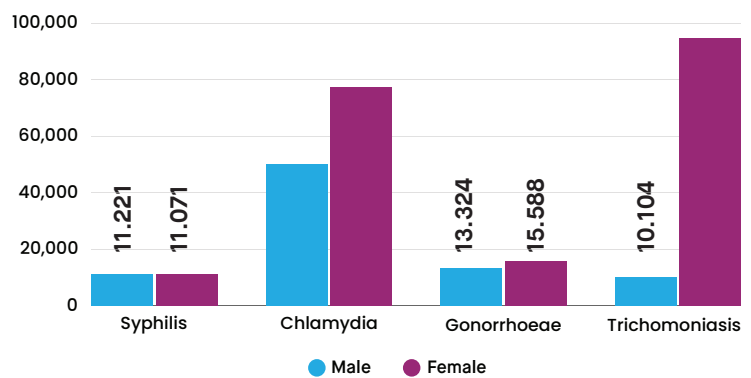
Bacteria

- Chlamydia
- Gonorrhea
- Syphilis

Protozoan parasite

- Trichomoniasis

Prevalent cases of STD (in thousands)



Source: World Health Organization, Last updated 2023-07-25

New infections of chlamydia, gonorrhoea, syphilis or trichomoniasis

374 million
in adults 15 to 49 in 2020

New infections of chlamydia, gonorrhoea, syphilis or trichomoniasis

over 1 million
new cases per day in adults 15 to 49 in 2020

Multiple results with a single sample.



Chlamydia + Gonorrhea Test Kit

The Chlamydia + Gonorrhea Test Kit is a rapid chromatographic immunoassay intended for the qualitative detection of *Chlamydia trachomatis* and *Neisseria gonorrhoeae* antigens in female cervical swab specimens, with results in 15 minutes.



Box Content

- 25x Test Cassette
- 1x Sample Diluent A
- 1x Sample Diluent B
- 25x Swab
- 25x Tube
- 1x Instruction for Use

Sexually Transmitted Diseases All Products

Ref. No	Name	Specimen*	Kit Size	Certificates
VMD01	HAV IgM Test Kit	S/P/ WB	25 T	RUO
VMD02	HBsAb Test Kit	S/P/ WB	25 T	RUO
VMD03	HCV Ab Test Kit	S/P/ WB	25 T	RUO
VMD04	Syphilis Ab Test Kit	S/P/ WB	25 T	CE
VMD10	HBsAg Test Kit	S/P/ WB	25 T	RUO
VMD12	HIV (1/2) Ab Test Kit	S/P/ WB	25 T	RUO
VMD13	HIV (1/2) Test Kit (Oral Fluid)	Saliva	25 T	RUO
VMD14 ★	HIV Ag/Ab Test Kit	S/P/ WB	25 T	RUO
VMD32 ★	HIV/Syphilis Test Kit	S/P/ WB	25 T	RUO
VMD33	HBsAg + HCV + HIV + Syphilis Test Kit	S/P/ WB	25 T	RUO
VMD30	Chlamydia trachomatis Test Kit	CS	25 T	RUO
VMD39	Neisseria gonorrhoeae Test Kit	CS	25 T	CE, MHRA
VMD72	Syphilis Ab (S/P) Test Kit	S/P	25 T	CE
VMD109 ★	Chlamydia + Gonorrhea Test Kit	CS	25 T	RUO
VMD105	HEV IgM Test Kit	S/P/ WB	25 T	CE
VMD114 ★	Trichomonas Vaginalis Test Kit	CS	25 T	CE
VMD142	CT/NG Test Kit	CS	25 T	RUO

★ Highlighted Product

* WB (Whole Blood), S (Serum), P (Plasma), CS (Cervical Swab)

RESPIRATORY DISEASES

Respiratory diseases are caused by various microorganisms that infect the respiratory tract. These pathogens can infect various parts of the respiratory system, including the upper respiratory tract (nose, throat, and sinuses) and the lower respiratory tract (lungs and airways). Our Respiratory Diagnostic Solutions focus on the following pathogens:

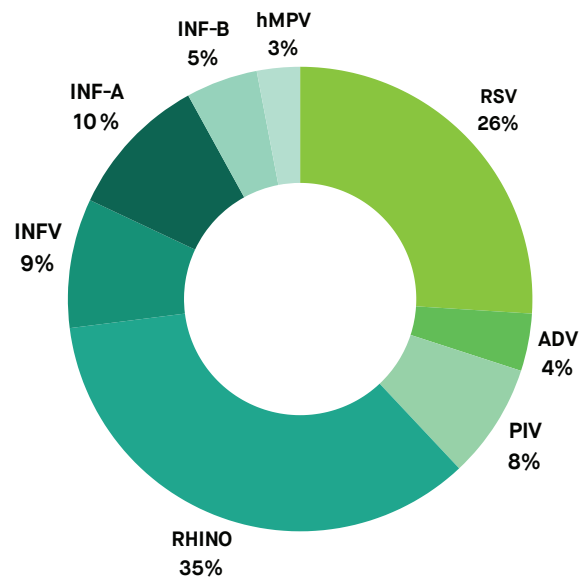
Viruses

- Influenza Viruses
- Respiratory Syncytial Virus (RSV)
- Coronaviruses
- Adenovirus (ADV)
- Human metapneumovirus (hMPV)

Bacteria

- *Streptococcus pyogenes*
- *Mycoplasma pneumoniae*
- *Legionella pneumoniae*
- *Streptococcus pneumoniae*

World prevalence rates of respiratory viral infections



Source: ICMR-National AIDS Research Institute

Sampling



Multiple results with a single sample.



SARS-CoV-2 + FLU A/B + RSV + ADV + hMPV

The SARS-CoV-2 + FLU A/B + RSV + ADV + hMPV Test Kit is an in vitro immunochromatographic assay for the concurrent, qualitative detection of SARS-CoV-2, influenza A and B, respiratory syncytial virus (RSV), adenovirus (ADV), and human metapneumovirus (hMPV) in human nasopharyngeal swab specimens. It provides clear results within minutes to support differential diagnosis and timely patient management when respiratory pathogens are circulating.



Box Content

- 20x Test Cassette
- 20x Sample Diluent
- 20x Swab
- 1x Instruction For Use

Respiratory Diseases All Products

Ref. No	Name	Specimen*	Kit Size	Certificates
VSCD02	SARS-CoV-2 Test Kit	N/NP/OP	25 T	CE
VSCD08	SARS-CoV-2/FLU A & B Test Kit	N/NP	25 T	CE
VSCD10	SARS-CoV-2 + FLU A/B Test Kit	N/NP	25 T	CE, TGA
VMD17	Influenza A/B Test Kit	N/NP	25 T	CE, MHRA
VMD36 ★	Strep A Test Kit	TS	25 T	CE, MHRA
VMD66	RSV Test Kit	NP	25 T	CE, MHRA
VMD71 ★	SARS-CoV-2 + FLU A/B + RSV Test Kit	N/NP	25 T	CE
VMD77 ★	FLU A/B + RSV Test Kit	N/NP	25 T	CE, MHRA
VMD79 ★	SARS-CoV-2 + FLU A/B + RSV + ADV Test Kit	NP/OP/AN	20 T	CE
VMD80	SARS-CoV-2 + RSV Test Kit	N/NP/OP	25 T	CE
VMD81	SARS-CoV-2 + FLU A/B + RSV + ADV + MP Test Kit	N/NP/OP	20 T	CE
VMD82	Mycoplasma pneumoniae Test Kit	NP/OP	25 T	CE
VMD92 ★	Legionella pneumophila Test Kit	U	25 T	CE
VMD101	ADV + M. pneumoniae Test Kit	NP	25 T	CE
VMD110	Streptococcus pneumoniae Test Kit	U	25 T	CE
VMD112 ★	RSV/ADV Test Kit	N/NP/OP	25 T	CE
VMD141 ★	SARS-CoV-2 + FLU A/B + RSV + hMPV Test Kit	N/NP/OP	20 T	CE
VMD146	SARS-CoV-2 + FLU A/B + RSV + ADV + hMPV Test Kit	N/NP/OP	20 T	CE
VMD148	Rhinovirus Test Kit	NP	25 T	CE
VMD149	SARS-CoV-2 + FLU A/B + hMPV + RhV + RSV/ADV Test Kit	N/NP/OP	25 T	CE
VMD150 **	Strep A v2.0 Test Kit	TS	25 T	CE
VMD151	HPIV Test Kit	NP	25 T	CE
VMD152	SARS-CoV-2 + FLU A/B + hMPV + HPIV + RhV + RSV/ADV Test Kit	NP	20 T	CE
VMD153	SARS-CoV-2 + FLU A/B + hMPV + HPIV + RSV/ADV Test Kit	NP	20 T	CE
VMD154	SARS-CoV-2 + FLU A/B + HPIV + RSV + ADV Test Kit	NP	20 T	CE
VMD155	SARS-CoV-2 + FLU A/B + RSV + ADV + hMPV + HPIV Test Kit	NP	20 T	CE
VMD156	SARS-CoV-2 + FLU A/B + RSV/ADV Test Kit	N/NP/OP	25 T	CE
VMD157	SARS-CoV-2 + FLU A/B + RSV + ADV + RhV Test Kit	N/NP/OP	20 T	CE
VMD158	Rhinovirus + ADV Test Kit	NP	25 T	CE
VMD159	SARS-CoV-2 + FLU A/B + RSV + ADV + MP + hMPV + HPIV + RhV Test Kit	NP	20 T	CE
VMD160	SARS-CoV-2 + FLU A/B + RSV + ADV + RhV + hMPV Test Kit	NP	20 T	CE
VMD161	FLU A/B + SARS-CoV-2/RSV Test Kit	N/NP/OP	25 T	CE

★ Highlighted Product

*N (Nasal), NP (Nasopharyngeal), OP (Oropharyngeal), AN (Anterior Nasal), TS (Throat Swab), U (Urine)

**Single Buffer

GASTROINTESTINAL DISEASES

Gastrointestinal diseases refer to a group of disorders that affect the digestive system, which includes the stomach, intestines, liver, gallbladder, and other associated organs. These diseases can affect people of all ages and can range from mild to severe. Early detection and management can significantly improve outcomes for many gastrointestinal conditions. Our Gastrointestinal Disease Solutions focus on the following pathogens:

Viruses

- Rotavirus
- Adenovirus
- Norovirus
- Astrovirus
- Enterovirus

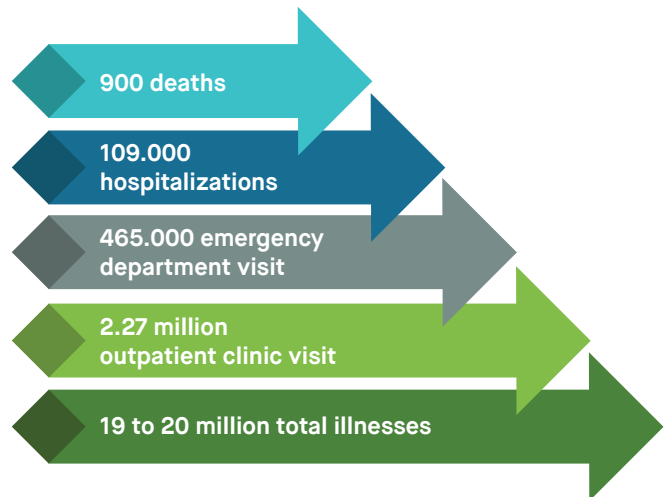
Bacteria

- *Helicobacter pylori* (*H. pylori*)
- *Salmonella Typhi*
- *Clostridioides difficile* (*C. difficile*)
- *Vibrio cholera*

Protozoans

- *Giardia Lamblia*
- *Cryptosporidium parvum*
- *Entamoeba histolytica*, *Entamoeba dispar*

Burden of Norovirus in the United States



Source: Centers for Disease Control and Prevention

Multiple results with a single sample.



Rota + Adeno + Noro + Astro + Entamoeba + Giardia Test Kit

The RapidFor™ Rota + Adeno + Noro + Astro + Entamoeba + Giardia Test Kit is a combination rapid antigen test designed to detect antigens associated with six gastrointestinal pathogens, including rotavirus, adenovirus, norovirus, astrovirus, *Entamoeba* spp., and *Giardia* spp. It delivers quick, easy-to-interpret results from human stool specimens within minutes, supporting timely diagnosis and appropriate patient management.



Box Content

- 10x Test Cassette
- 10x Sample Diluent
- 1x Instruction For Use

Gastrointestinal All Products

Ref. No	Name	Specimen*	Kit Size	Certificates
VMD16 ★	H.Pylori Test Kit	F	20 T	CE, MHRA
VMD35	H.Pylori Ab Test Kit	S/P	25 T	CE, MHRA
VMD136	Campylobacter Test Kit	F	20 T	CE
VMD27	Salmonella Typhi Test Kit	F	20 T	CE, MHRA
VMD24	Rotavirus Test Kit	F	20 T	CE, MHRA
VMD40	Adenovirus Test Kit	F	20 T	CE, MHRA
VMD41	Norovirus Test Kit	F	20 T	CE, MHRA
VMD42	Astrovirus Test Kit	F	20 T	CE
VMD25	Rota + Adeno Test Kit	F	20 T	CE
VMD75 ★	Rota/Adeno Test Kit	F	20 T	CE
VMD84 ★	Rota/Adeno + Norovirus Test Kit	F	20 T	CE
VMD93	Rota + Adeno + Norovirus Test Kit	F	20 T	CE
VMD91 ★	Rota + Adeno + Noro + Astrovirus Test Kit	F	20 T	CE
VMD88	C.difficile GDH Test Kit	F	20 T	CE
VMD89	C.difficile Toxin A + B Test Kit	F	20 T	CE
VMD67	Giardia lamblia Test Kit	F	20 T	CE, MHRA
VMD68	Cryptosporidium Test Kit	F	20 T	CE, MHRA
VMD69	Entamoeba Test Kit	F	20 T	CE
VMD94 ★	Crypto + Giardia + Entamoeba Test Kit	F	20 T	CE
VMD96	C.difficile GDH + Toxin A + Toxin B Test Kit	F	20 T	CE
VMD107	Crypto + Giardia Test Kit	F	20 T	CE
VMD87	Cholera O1/O139 Test Kit	F	20 T	CE
VMD115	Calprotectin Test Kit	F	20 T	CE
VMD116	Lactoferrin Test Kit	F	20 T	CE
VMD117	Transferrin Test Kit	F	20 T	CE
VMD70	FOB + Transferrin Test Kit	F	20 T	CE, MHRA
VMD118	FOB + Transferrin + Calprotectin + Lactoferrin Test Kit	F	20 T	CE
VMD123 ★	Entamoeba + Giardia Test Kit	F	20 T	CE
VMD137	Calprotectin (50µg/g + 200µg/g) Test Kit	F	20 T	CE
VMD144	E.coli O157 Test Kit	F	20 T	CE
VMD145	E.coli H7 Test Kit	F	20 T	CE
VMD162	Rota + Adeno + Noro + Astro + Entamoeba + Giardia Test Kit	F	10 T	CE

★ Highlighted Product

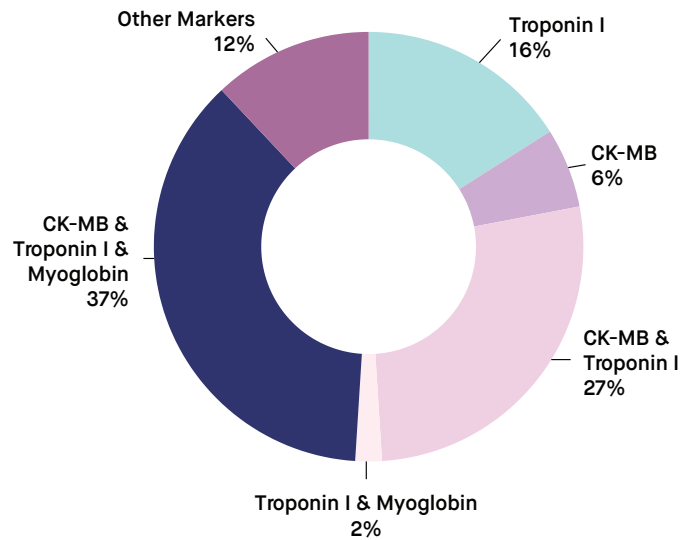
*F (Feces), S (Serum), P (Plasma),

CARDIAC MARKERS

Cardiac markers are substances released into the blood when the heart is damaged or stressed. These markers are commonly used in medical diagnostics, particularly in the context of cardiac conditions and events such as heart attacks. Cardiac marker testing is often performed in emergency rooms, hospitals, and clinical settings to help diagnose and assess heart-related conditions. At Vitrosens Biotechnology, we particularly focus on the following markers.

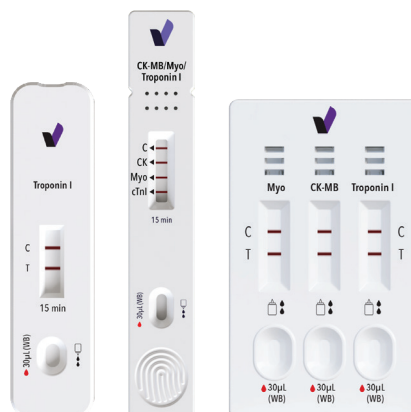
- Troponins
- Creatine Kinase-MB (CK-MB)
- Myoglobin
- Heart-Type Fatty Acid Binding Protein (H-FABP)
- N-Terminal pro-Brain Natriuretic Peptide (NT-proBNP)
- D-Dimer

The Most Commonly Used Cardiac Markers



Source: American Association for Clinical Chemistry

Multiple results with a single sample.



Troponin I

The RapidFor™ Troponin I Rapid Test Kit is a diagnostic tool designed to detect the presence of troponin I in a patient's blood sample. Troponin I is a cardiac muscle protein released into the bloodstream when there is damage to the heart muscle, particularly during events such as myocardial infarction (heart attack).



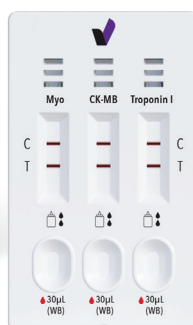
Box Content

- Test Cassette
- Sample diluent
- Dropper
- User manual

Cut off
0,5 ng/mL

Myo + CK-MB + Troponin I

The test is a rapid chromatographic immunoassay for the qualitative detection of human Myoglobin, CK-MB, and cardiac Troponin I in whole blood, serum, or plasma as an aid in the diagnosis of myocardial infarction (MI).



Box Content

- Test Cassette
- Sample diluent
- Dropper
- User manual

Cardiac Markers All Products

Ref. No	Name	Specimen*	Cut-off	Kit Size	Certificates
VMD49	Troponin I Test Kit	S/P/WB	0.5 ng/mL	25 T	CE
VMD50	Myoglobin Test Kit	S/P/WB	50 ng/mL	25 T	CE
VMD51	CK-MB Test Kit	S/P/WB	5 ng/mL	25 T	CE
VMD54	NT-proBNP Test Kit	S/P/WB	0.45 ng/mL	25 T	CE
VMD56	D-Dimer Test Kit	S/P/WB	500 ng/mL	25 T	CE
VMD55 ★	Myo + CK-MB + Troponin I Test Kit	S/P/WB	cTnI: 0.5 ng/mL Myo: 50 ng/mL CK-MB: 5 ng/mL	25 T	CE

★ Highlighted Product

*S (Serum), P (Plasma), WB (Whole Blood)

TROPICAL DISEASES

Tropical diseases encompass a diverse group of infectious diseases that prevail in tropical and subtropical regions of the world. These diseases are often associated with poverty, poor sanitation, and limited access to healthcare. Our Tropical Disease Solutions focus on the following pathogens:

Viruses

- Dengue
- Chikungunya
- Zika Virus

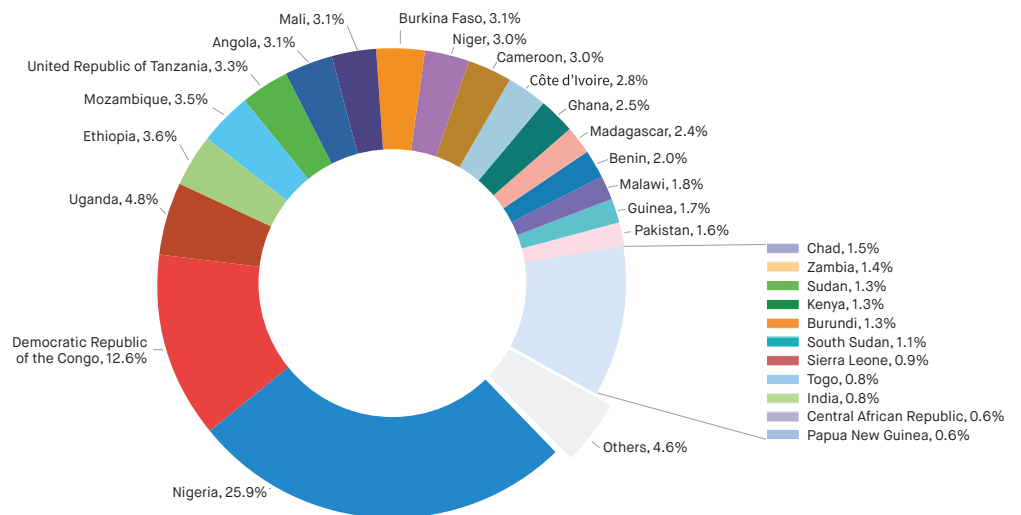
Bacteria

- *Salmonella Typhi*

Protozoan parasite

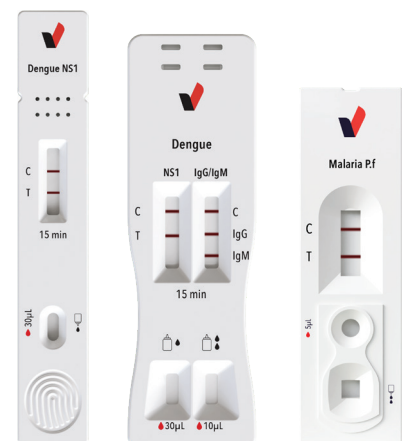
- *Plasmodium spp.*

Distribution of Malaria cases by Africa countries



Source: World Health Organization, World Health Statistics 2023

Our innovative approach ensures **quick** and **accurate results**, facilitating timely diagnosis and **intervention** in the fight against these challenging health conditions.



Dengue NS1

The RapidFor™ Dengue NS1 Ag Rapid Test Kit is an in vitro diagnostic test designed to quickly diagnose infections caused by the dengue virus. Dengue fever is an infection caused by the dengue virus, which is transmitted through the bite of Aedes mosquitoes.



Box Content

- Test cassette
- Sample diluent
- Dropper
- User Manual

Tropical All Products

Ref. No	Name	Specimen	Kit Size	Certificates
VMD08 ★	Dengue NS1 Test Kit	S/P/WB	25 T	CE, MHRA
VMD38	Dengue IgG/IgM Test Kit	S/P/WB	25 T	CE, MHRA
VMD06 ★	Dengue IgG/IgM + NS1 Test Kit	S/P/WB	25 T	CE, MHRA
VMD20	Malaria P.f. (HRP2) Test Kit	WB	25 T	CE
VMD21 ★	Malaria Pan/P.f. Test Kit	WB	25 T	CE, MHRA
VMD22 ★	Malaria P.v./P.f. Test Kit	WB	25 T	CE
VMD128	Malaria P.f. pLDH/HRP2 Test Kit	WB	25 T	CE

★ Highlighted Product

*S (Serum), P (Plasma), WB (Whole Blood)

TUMOR MARKERS

Tumor markers are substances that can be detected in the blood, urine, or tissues and may indicate the presence of cancer. These markers are often produced by cancer cells or by other cells in the body in response to the presence of cancer. It's important to note that the presence of a tumor marker doesn't necessarily confirm the presence of cancer. At Vitrosens Biotechnology, we particularly focus on the following markers.

Prostate-Specific Antigen (PSA):

Associated with prostate cancer. Elevated PSA levels may indicate the presence of prostate cancer, but other conditions can also cause PSA levels to rise.

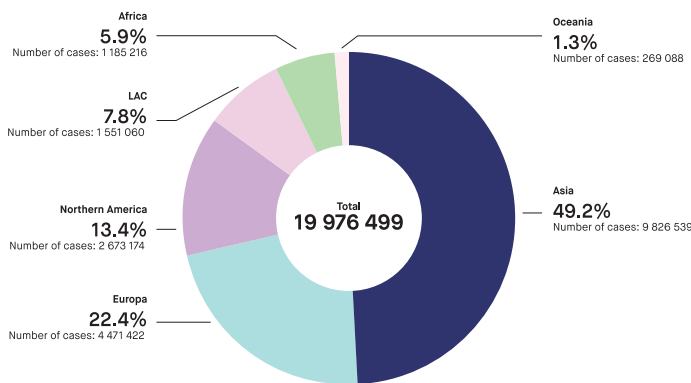
Carcinoembryonic Antigen (CEA):

Associated with colorectal cancer. Elevated CEA levels may also be found in other cancers and non-cancerous conditions.

Alpha-Fetoprotein (AFP):

Associated with liver cancer (hepatocellular carcinoma) and certain types of testicular cancer.

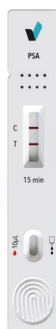
Global Cancer Incidence



Source: International Agency for Research on Cancer and the World Health Organization.

PSA

The RapidFor™ PSA Rapid Test Kit is an in vitro diagnostic tool designed to detect the presence of prostate-specific antigen (PSA) in whole blood, serum, or plasma samples. PSA is a protein produced by the prostate gland, and elevated levels of PSA in the blood may indicate conditions such as prostate cancer or other prostate-related issues. The test is often used as a screening tool to assess prostate health.



Cut off
4 ng/mL

Box Content

- Test cassette
- Sample Diluent
- Dropper
- User Manual

Tumor Markers All Products

Ref. No	Name	Specimen*	Cut-off	Kit Size	Certificates
VMD09	FOB Test Kit	F	50 ng/mL	20 T	CE
VMD44	AFP Test Kit	S/P/WB	10 ng/mL	25 T	CE
VMD45	CEA Test Kit	S/P/WB	5 ng/mL	25 T	CE
VMD46 ★	PSA Test Kit	S/P/WB	4 ng/mL	25 T	RUO

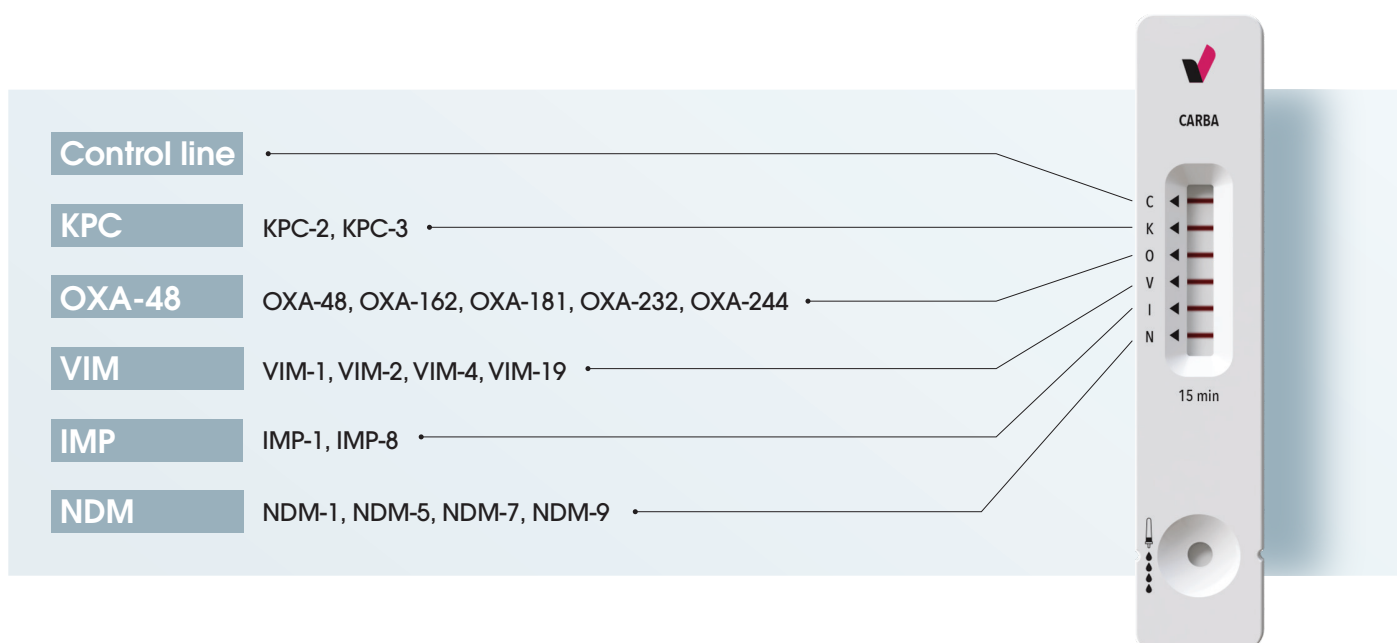
★ Highlighted Product

*S (Serum), P (Plasma), WB (Whole Blood), F (Feces)

OTHERS

CARBA

The RapidFor™ CARBA Test Kit is a rapid immunochromatographic test designed for the qualitative detection of carbapenemase-producing organisms (CPO), including OXA-48, KPC, NDM, VIM and IMP, in cultured Enterobacteriaceae samples. It provides easy-to-interpret visual results within 15 minutes, supporting timely screening and clinical decision-making.



Advantages

- Qualitative detection of 5 major carbapenemases on a single strip
- Supports rapid screening for carbapenemase-producing organisms
- Results in 15 minutes
- Easy-to-interpret visual readout
- Suitable for cultured Enterobacteriaceae samples
- Applicable for both liquid culture and solid culture workflow

Others All Products

Ref. No	Name	Specimen*	Kit Size	Certificates
VMD133	Mono Test Kit	S/P/WB	25 T	CE
VMD182	CARBA Test Kit	Culture	25 T	CE

FERTILITY

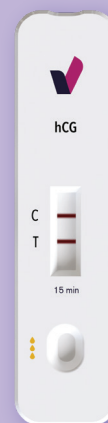
Strip Test



Midstream Test



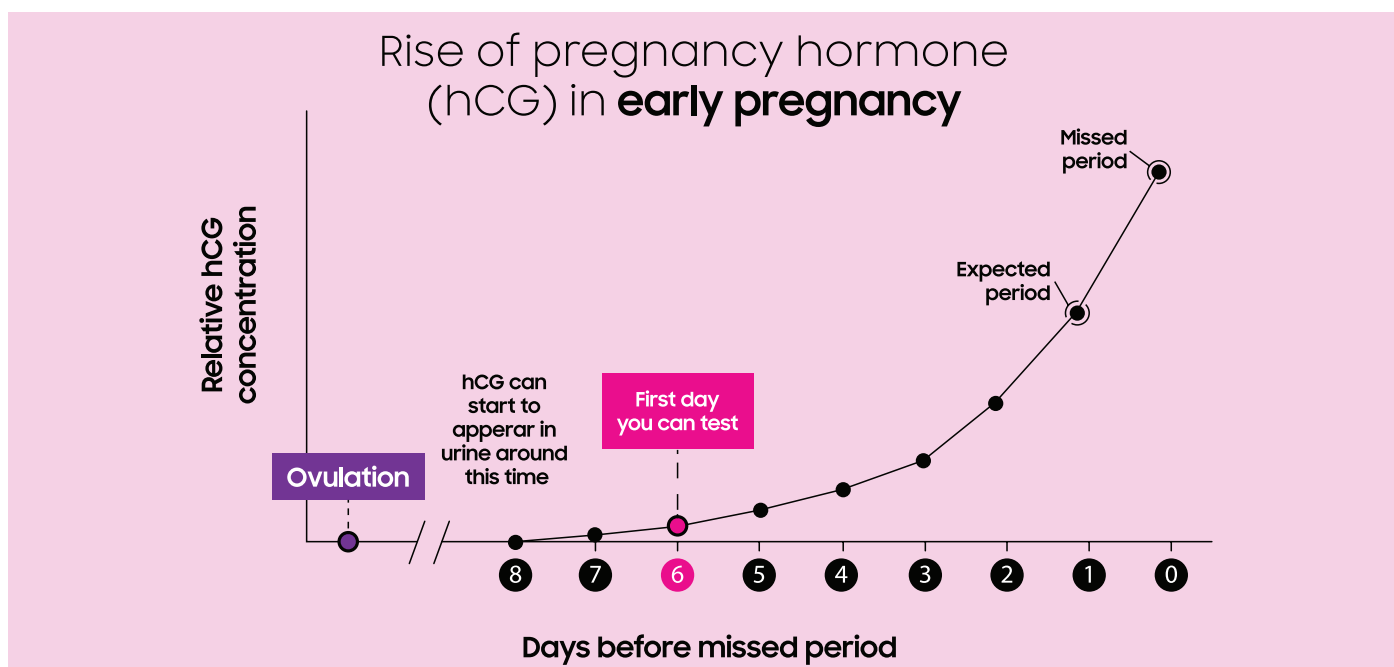
Cassette Test



Test Portfolio with **Three Diverse Formats** Provide Early Detection of the **Pregnancy Hormone (hCG)**.

Early Pregnancy

The RapidFor™ Early Pregnancy Test is a type of home pregnancy test designed to detect the presence of human chorionic gonadotropin (hCG) in a woman's urine. hCG is a hormone produced during pregnancy, and its levels increase as the pregnancy progresses. Early pregnancy tests are specifically formulated to be more sensitive and may claim to detect pregnancy even before a missed period.



Fertility All Products

Ref. No	Name	Specimen*	Cut-Off	Kit Size	Certificates
VMD59C ★	Early Pregnancy Test Kit	U	10 mIU/mL	25 T	CE, TGA
VMD59S ★	Early Pregnancy Test Kit	U	10 mIU/mL	50/100 T	CE, TGA
VMD60C ★	Pregnancy Test Kit	U	25 mIU/mL	25 T	CE
VMD60S ★	Pregnancy Test Kit	U	25 mIU/mL	50 T	CE
VMD61C	Ovulation LH Test Kit	U	25 mIU/mL	25 T	CE, FDA, TGA
VMD61S	Ovulation LH Test Kit	U	25 mIU/mL	50 T	CE, FDA, TGA
VMD85C	Pregnancy (S/U) Test Kit	S/U	25 mIU/mL	25 T	CE
VMD85S	Pregnancy (S/U) Test Kit	S/U	25 mIU/mL	50 T	CE
VMD86C**	FSH (Menopause) Test Kit	U	25 mIU/mL	25 T	CE
VMD86S**	FSH (Menopause) Test Kit	U	25 mIU/mL	50 T	CE

★ Highlighted Product

*U (Urine), S (Serum)

**C (Cassette), S (Strip), M (Midstream)

DRUG OF ABUSE

Drug of abuse tests, commonly known as drug tests or screenings, are diagnostic tests used to detect the presence of specific substances or their metabolites in a person's body. These tests are often employed for various purposes, including workplace testing, athletic competitions, legal matters, and healthcare assessments. The most common types of drug of abuse tests include urine tests and saliva tests.

Single Cassette Test



Strip Version of Test



Multi DipCard Test



Multi Test Cup



DrugFor™ can be utilized to investigate suspected drug addiction with **four different test versions.**

Urine Multi-Drug

The DrugFor™ Urine Multi-Drug Test is a diagnostic tool designed to simultaneously detect the presence of multiple drugs or their metabolites in a urine sample. These tests are commonly used for various purposes, including workplace drug testing, clinical assessments, forensic investigations, and substance abuse treatment programs.



Urine **adulteration** test strips indicate whether a urine sample is valid to be used in drug testing. The strip can give rapid and semi-quantitative detection with any 3 combination of the following 6 parameters.

Urine temperature indicator strip



• Creatinine • Nitrite • Gluturaldehyde • pH • Specific Gravity • Oxidants



Drugs and drug metabolites we can screen						
Drug	Description	Cut-Off	Drug	Description	Cut-Off	
1	AMP AMP AMP	Amphetamine (AMP)	21	6-MAM 6-MAM	6-Monoacetyl (6-MAM)	
2	BAR BAR BAR	Barbiturates (BAR)	22	PAP APAP APAP	Acetaminophen (APAP)	
3	BZO BZO BZO	Benzodiazepines (BZO)	23	CAF CAF CAF	Caffeine (CAF)	
4	BUP BUP BUP	Buprenorphine (BUP)	24	ETO ETO ETO	Etomidate (ETO)	
5	COC COC COC	Cocaine (COC)	25	ETG ETG ETG	Ethyl Glucuronide (ETG)	
6	THC THC THC	Marijuana (THC)	26	GAB GAB GAB	Gabapentin (GAB)	
7	MET MET MET	Methamphetamine (MET)	27	HMO HMO HMO	Hydromorphone (HMO)	
8	MTD MTD MTD	Methadone (MTD)	28	LSD LSD LSD	Lysergic Acid Diethylamide (LSD)	
9	MDMA MDMA MDMA	Methylenedioxymethamphetamine-ecstasy (MDMA)	29	mCAT mCAT mCAT	MethCathinone (mCAT)	
10	MOP MOP MOP	Morphine (MOP)	30	MDPV MDPV MDPV	Methylenedioxypyrovalerone (MDPV)	
11	OXY OXY OXY	Oxycodone (OXY)	31	PGB PGB PGB	Pregabalin (PGB)	
12	PCP PCP PCP	Phencyclidine (PCP)	32	ABP-K3 ABP-K3	AB-PINACA (ABP-K3)	
13	PPX PPX PPX	Propoxyphene (PPX)	33	SOMA SOMA SOMA	Carisoprodol (SOMA)	
14	TCA TCA TCA	Tri-cyclic Antidepressants (TCA)	34	MQL MQL MQL	Methaqualone (MQL)	
15	K2 K2 K2	Synthetic Cannabis (K2)	35	XYL XYL XYL	Xylazine (XYL)	
16	OPI OPI OPI	Opiate (OPI)	36	KET KET KET	Ketamine (KET)	
17	TML TML TML	Tramadol (TML)	37	UR144-K4 UR144-K4	UR-144 (UR144-K4)	
18	EDDP EDDP EDDP	Methadone Metabolite (EDDP)	38	MEP MEP MEP	Mephedrone HCl (MEP)	
19	FYL FYL FYL	Fentanyl (FYL)	39	α-PVP α-PVP	α-Pyrrolidinopentiophenone (α-PVP)	
20	COT COT COT	Cotinine (COT)	40	ALC ALC ALC	Alcohol (ALC)	

Ref/Cat No	Name	Kit Size	Certificates
VDDOA02C	Urine Multi-Drug Test Cup	10/25T	CE
VDDOA40KC	Urine Multi-Drug Test Key Cup	10/25T	CE
VDDOA03	Multi-Drug Screen Test Kit	10/25T	CE

Saliva Multi-Drug Test

The DrugFor™ Saliva Multi-Drug Test Cup is a diagnostic tool designed to simultaneously detect the presence of multiple drugs or their metabolites in a saliva (oral fluid) sample. The multi-drug test cups provide a convenient and non-invasive way to collect and test saliva for the presence of drugs.



Turns **red** when adequate saliva has been collected!

Drugs and drug metabolites we can screen

Drug	Description	Cut-Off	Drug	Description	Cut-Off
1	MDMA MDMA MDMA MDMA	Methylenedioxy-methamphetamine (MDMA) 100 ng/mL	16	mCAT mCAT mCAT mCAT	MethCathinone (mCAT) 100/80 ng/mL
2	OXY OXY OXY OXY	Oxycodone (OXY) 20 ng/mL	17	FYL FYL FYL FYL	Fentanyl (FYL) 20/50/10 ng/mL
3	AMP AMP AMP AMP	Amphetamine (AMP) 50 ng/mL	18	OPI OPI OPI OPI	Opiates (OPI) 40/80/20/10 ng/mL
4	BZO BZO BZO BZO	Benzodiazepines (BZO) 30 ng/mL	19	MQL MQL MQL MQL	Methaqualone (MQL) 50 ng/mL
5	BAR BAR BAR BAR	Barbiturates (BAR) 20/60 ng/mL	20	PPX PPX PPX PPX	Propoxyphene (PPX) 50 ng/mL
6	COC COC COC COC	Cocaine (COC) 20 ng/mL	21	TCA TCA TCA TCA	Tri-cyclic Antidepressants (TCA) 50 ng/mL
7	COT COT COT COT	Cotinine (COT) 20/30 ng/mL	22	KET KET KET KET	Ketamine (KET) 100/80/50 ng/mL
8	PCP PCP PCP PCP	Phencyclidine (PCP) 10 ng/mL	23	TML TML TML TML	Tramadol (TML) 30/60/20 ng/mL
9	MTD MTD MTD MTD	Methadone (MTD) 30 ng/mL	24	MET MET MET MET	Methamphetamine (MET) 50/25 ng/mL
10	BUP BUP BUP BUP	Buprenorphine (BUP) 5 ng/mL	25	MOP MOP MOP MOP	Morphine (MOP) 20/40/30/10 ng/mL
11	K2 K2 K2 K2	Synthetic Cannabis (K2) 25/50 ng/mL	26	THC THC THC THC	Marijuana (THC) 12/50/40/20 ng/mL
12	EDDP EDDP EDDP EDDP	Methadone Metabolite (EDDP) 20 ng/mL	27	MDPV MDPV MDPV MDPV	Metylenedioxypropylvalerone (MDPV) 10 ng/mL
13	ALC ALC ALC ALC	Alcohol (ALC) 0.02% BAC	28	6-MAM 6-MAM 6-MAM 6-MAM	6-Monoacetyl (6-MAM) 10 ng/mL
14	APAP APAP APAP APAP	Acetaminophen (APAP) 80/40 ng/mL	29	SOMA SOMA SOMA SOMA	Carisoprodol (SOMA) 300/1000 ng/mL
15	LSD LSD LSD LSD	Lysergic Acid Diethylamide (LSD) 10 ng/mL			

Ref. No	Name	Kit Size	Certificates
VDDOA01	Saliva Multi-Drug Test Kit	10/25T	CE
VDDOA04 ★	Saliva Multi-Drug Test Cup	10/25T	CE

★ Highlighted Product



IN TEST WE TRUST

vitrosens.com